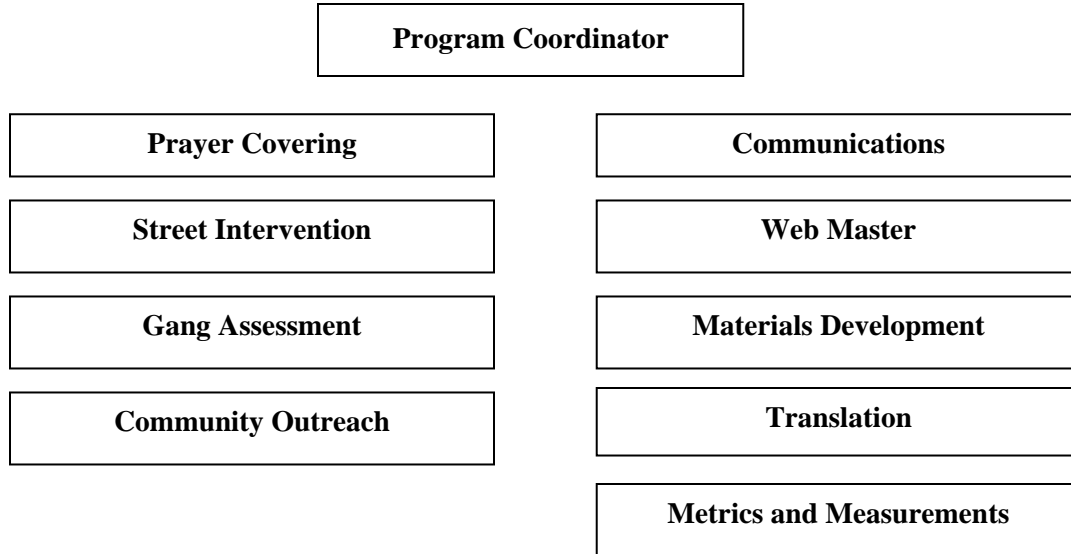


Roles and Responsibilities

Last updated 4/17/09



LWSGI Needed Attributes

- I. Strong Christian standards and morals
- II. Submission to authority
- III. Compassion for gang-involved and at-risk youth
- IV. Multi-lingual (helpful)

Program Coordinator

- I. Attributes
 - A. Prior law enforcement or civilian gang intervention/prevention experience
 - B. Ability to work with all facets of the criminal justice system
 - C. Prior experience working with gang-involved and/or at-risk youth
 - D. Ability to lead and direct others
 - E. Organized; ability to multi-task
 - F. Ability to “think outside of the box”
- II. Responsibilities
 - A. Oversight and direction of LWSGI
 - B. Network and establish relationships with churches, local agencies and organizations, and within neighborhood(s)
 - C. Primary interface to law enforcement and criminal justice system

Prayer Covering

- I. Prayer Leader Responsibilities
 - A. Prayer Chain (phone)
 - 1. Primary contact to activate the chain
 - 2. Oversight of prayer chain
 - B. Prayer Meetings
 - 1. Schedule and organize
 - 2. Structure and lead prayer meeting
 - C. Prayer Journeys
 - 1. Schedule and organize
 - 2. Structure and lead prayer journey
 - 3. Primary interface to law enforcement
- II. Pray-er Attributes
 - A. Passion for prayer

Street Intervention

- I. Team Leader Responsibilities
 - A. Structure and lead team of approximately 10 team members
 - B. Primary interface to law enforcement
- II. Street Worker Attributes
 - A. Passion for “incarnate” ministry to gang-involved and at-risk youth

Gang Assessment

- I. Team Leader Responsibilities
 - A. Provide needed tools to parents and other caregivers to assess if children are at-risk for gang involvement, currently involved in a gang, and depth of gang involvement
 - B. Direct families to “next-step” resources if a child is determined to be at-risk or gang-involved

Community Outreach

- I. Team Leader Responsibilities
 - A. Structure and lead team at community outreach event
 - B. Primary interface to other organizations at the event

Communications

- I. Attributes
 - A. Articulate in verbal and written communication
 - B. Prior experience working with gang-involved and/or at-risk youth (helpful)
 - C. Prior law enforcement or civilian gang intervention/prevention experience (helpful)
- II. Responsibilities
 - A. Primary interface for inquiries – phone calls, emails, questions

Web Master

- I. Attributes
 - A. Prior experience with web-design or quick-learner
 - B. Articulate in written communication; creative in design and visual representations
- II. Responsibilities
 - A. Development, administration and maintenance of website (www.lwsgi.com)

Materials Development

- I. Attributes
 - A. Articulate in written communication; creative in design and visual representations
 - B. Prior experience with materials development (helpful)
- II. Responsibilities
 - A. Oversee research, development, and distribution of materials used by LWSGI

Translation

- I. Attributes
 - A. Articulate in verbal and written communication
- II. Responsibilities
 - A. Oversight of translator work
 - B. Availability of translators... verbal and/or written

Metrics and Measurements

- I. Attributes
 - A. Ability to take raw data and formulate into meaningful measurements
- II. Responsibilities
 - A. Input raw data into measurement system
 - B. Formulate reports, graphs, etc. depicting data